

Water Flow Sensor SEN-HZ21WA (1/2") PVC

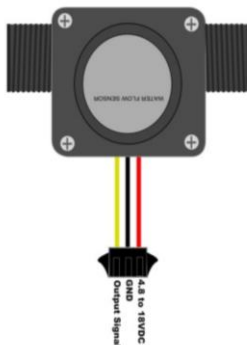


SEN-HZ21WA flow sensor can be used to accurately measure liquid volume and rate of flow flowing through it. It output digital pulses at frequency in proportion to the rate of flow. Accumulated number of pulses, on the other hand, gives an accurate measure of the liquid volume. Compatible in all gizduino boards and MCUs

SPECIFICATIONS:

- Input supply voltage: 4.8~18vdc
- Operation pressure: 1.75 MPA Maximum
- Flow rate: 1-30LPM
- Output: 5V logic

WORKING PRINCIPLE:



This water flow sensor is connected in line with the liquid whose flow rate has to be measured. There is a simple rotating wheel with a magnet and when the liquid flows the wheel is rotated and a hall effect sensor measures how many times the wheel is rotated and accordingly gives pulses. By counting the number of pulses you can easily calculate the flow rate as well as the amount of liquid dispensed.

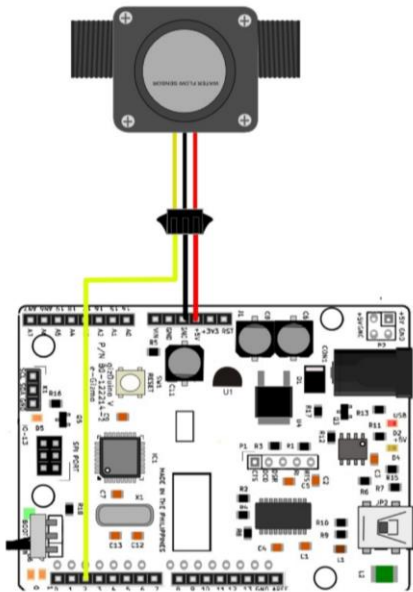
The sensor comes with a 3 pin JST connector.

Red: Vcc 4.8 to 18 volts

Black: Ground

Yellow: Pulse Output signal

TYPICAL APPLICATION CIRCUIT:



APPLICATIONS:

Widely used in water industrial field, such as thermostatic water heater, water purifier, water dispenser, smart card equipment, coffee machine etc.

